

GRACE LAVABO GRN50BI

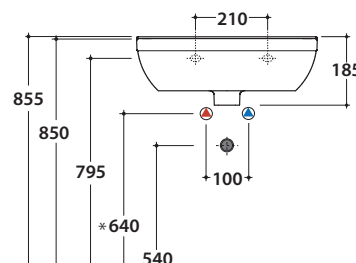
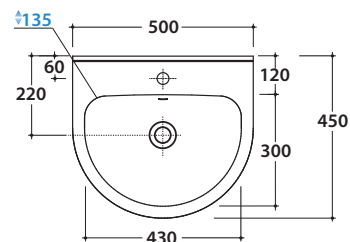
CE EN 14688:2015

GLOBO



Cod. **GRN50BI**

Lavabo 50.45 h 18,5 cm. Installazione sospesa, su colonna a terra o sospesa. Peso 14 Kg

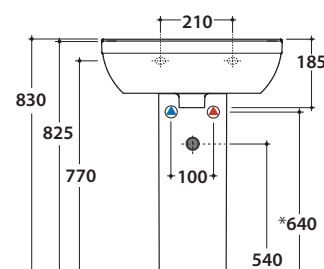


* Per rubinetto su piano



Cod. **GRN05BI**

Colonna a terra 16,5.18 h 68 cm. Per lavabi GRN60BI, GRN55BI e GRN50BI. Peso 12 Kg.

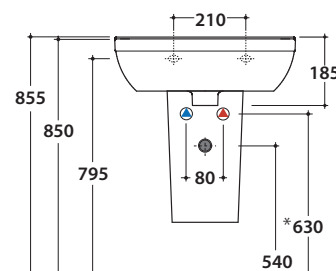


* Per rubinetto su piano



Cod. **GRSN5BI**

Colonna sospesa 28.19 h 32,5 cm. Per lavabi GRN60BI, GRN55BI, GRN50BI e DA060BI. Peso 10 Kg.



* Per rubinetto su piano



Cod. **FI012BI**

Piletta up and down con tappo in ceramica per lavabi con troppo pieno. Peso 0,5 Kg



Cod. **FI012CR**

Piletta cromata up and down per lavabi con troppopieno. Peso 0,5 Kg